



Dears,

INTELEN is a spin-off R&D group, founded by a core-group of promising high-educated Greek Engineers , in order to create an disseminate high-level web-based Information Technology services on the Greek and International EU sector.

INTELEN is a mirror of the Greek research potential targeting the opened Greek an International market, in the domains of web-based IT, Data Fusion, Energy Information Systems, Knowledge Engineering and Management with integrated Ambient Intelligence.

Our main philosophy is the bi-directional use of Internet. We take Internet as the basic means and method of accessing information and at the same time we use Internet to deliver web-based services to our clients. Internet is mainly considered as a big repository of chaotic information and at the same time a huge communication layer that brings together many people over services.

By using advanced algorithms that search, retrieve and categorise distributed knowledge, we create dynamic knowledge banks and use this knowledge over the Internet to serve our customer's needs for an effective Knowledge management procedure. The use of this knowledge repository is being realised through web-based technology, Internet and VPNs.

Our domain of applications is mainly the Energy Domain. Following extensive research activity on modern Energy Information Systems (EIS), Energy Data Mining, web-based Retrieval on Energy measurements, Ontology modelling, Internet-based Intelligence and Knowledge Management, INTELEN has already created two systems and methods of managing and manipulating telemetry-based Energy data and Energy sources through Internet and web-based IT systems. Both systems are protected by two Patents from OBI and in the future by the European Patent Office.

Our target and scope is to become an innovative leading Greek-EU high-tech company that will take into advantage and use the invaluable research potential and create advanced and future-oriented web-based services, according to the future society's needs.

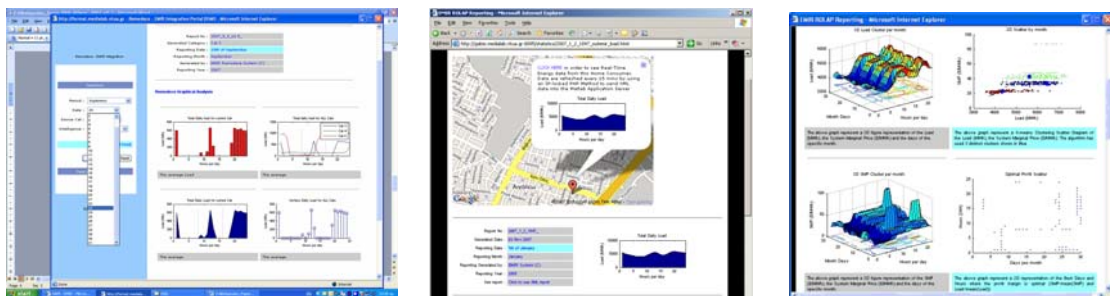
Intelten R&D Group

<http://www.intelen.gr>

INTELEN R&D Group
75 Lydias Str. 16121, Athens
Tel/fax. (+33) 210 7292666

info@intelen.gr
<http://www.intelen.gr>
<http://www.energyforce.gr>

EMIR (Energy Management & Intelligent Reporting) is a dynamic Web-based Decision Support System and it's new to its kind. The aim of this system and method is to develop an internetbased methodology that brings together energy consultants, domestic consumers and renewable technologies. Consumers' interaction with energy consultants will be a valuable step into implementing efficiently EU policies, focusing on the introduction of informative billing through end-use energy efficiency directive and the use of renewable energy sources. Furthermore, the involvement of utility companies (ESCOs) will be valuable in order to manage efficiently electricity production and to plan demand side management and energy efficiency programs. Energy-related market will be enforced and benefited through targeted information, behavioral changes and innovative accessibility internet tools. The system and method is patented with two Patent Applications in Greece and won the 2nd Prize in the first National Innovation Competition in 2007.



The **PLUGME@EMIR - Learn From Your Energy**

The project performs internet-based (portal) energy management functions over ADSL such as organizing energy use data, identifying energy consumption anomalies, managing energy costs, and automating demand response strategies and focused customer profiling. In this project, an innovative web-based intelligent Energy Information System (google-like machine) is created, for optimal energy management and minimisation of home and factory energy consumption (RES impact). This project assesses up to what extent intelligent, flexible, active electrical distribution nets based on Demand Side Integration (DSI) can contribute to improved energy services in larger European cities. At the site of the participating municipalities, the absolute quantity of energy saved and CO2 emissions reduction through this intelligent technology is determined. The contribution to better embedding of renewable energy resources (RES) is also estimated at each site. The functionality is pure web-based and there is also bi-directional messaging to Energy Customers for real-time communication (IP-based messages and emails). It is the next generation of a personalised Energy Google-like system with alerts that will guide citizens towards a new era of optimal Energy management and efficient environmental control.